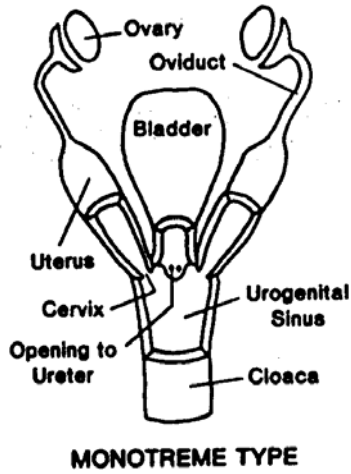
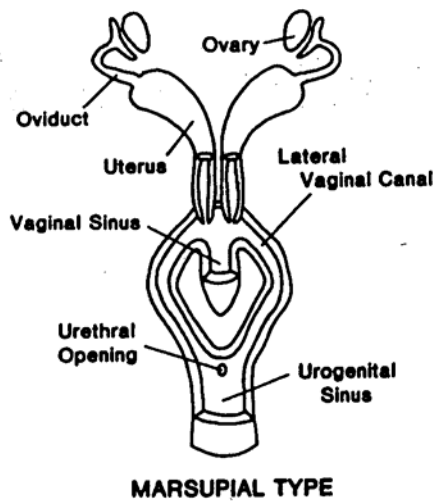


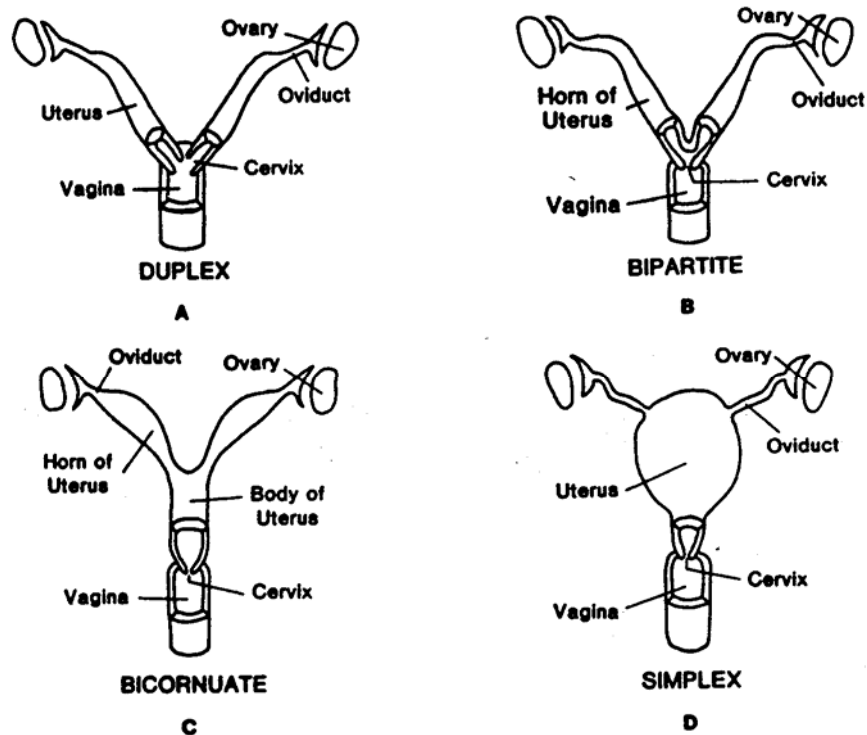
## Mammalian Uteri



The reproductive tract of a female monotreme. Note the presence of the urogenital sinus and the cloaca.



The reproductive tract of a female marsupial. The lateral vaginal canals receive the bifurcated penis of the male. The vaginal sinus opens and connects with the urogenital sinus to serve as a passageway for delivery of the young. Notice that the uteri are separate, the vaginae are paired, and that the urethral opening is separate from the urogenital opening.



**The 4 types of eutherian uteri.** In the duplex uterus (A), there are 2 uteri and 2 cervixes. The duplex uterus is found in the lagomorphs and rodents. In the bipartite uterus (B), there are 2 uteri and 1 cervix. The bipartite uterus is found in the cetaceans and carnivores. In the bicornuate uterus (C), the uterine horns are Y-shaped, being separated medially but fused distally, where they form a common chamber, the body, which opens into the vagina through a single cervix. The bicornuate uterus is found in insectivores, some bats, perissodactyls, and artiodactyls. In the simplex uterus (D), all separation between the uterine horns is lacking, and the single uterus opens into the vagina through 1 cervix. The simplex uterus is found in primates, some bats, and edentates.